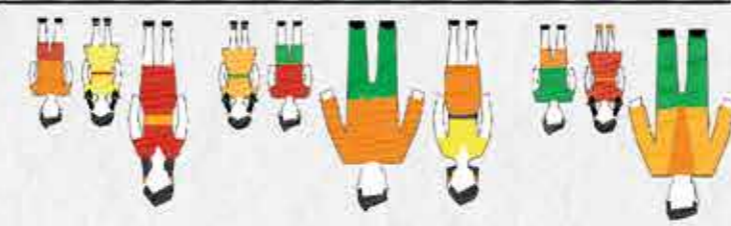


WHAT IS A FAMILY ASSESSMENT?

A Family Assessment is an early help assessment tool that helps your family understand what is going well for them and what their needs and worries are. It helps professionals to help you in areas that you would like to improve.

A Family Assessment includes everyone who is in your family including unborn babies. It's important that everyone in your family has their 'voice' heard and is supported.



A Family Assessment can include any family or household member, even if they do not have Parental Responsibility or play a caring role for a child in the home. Significant others can also be included if required.

Not all household members have to be included, but professionals must provide a justification as to why any household member has been excluded.

A **genogram**² (also known as a Family Tree) should be completed with your family.

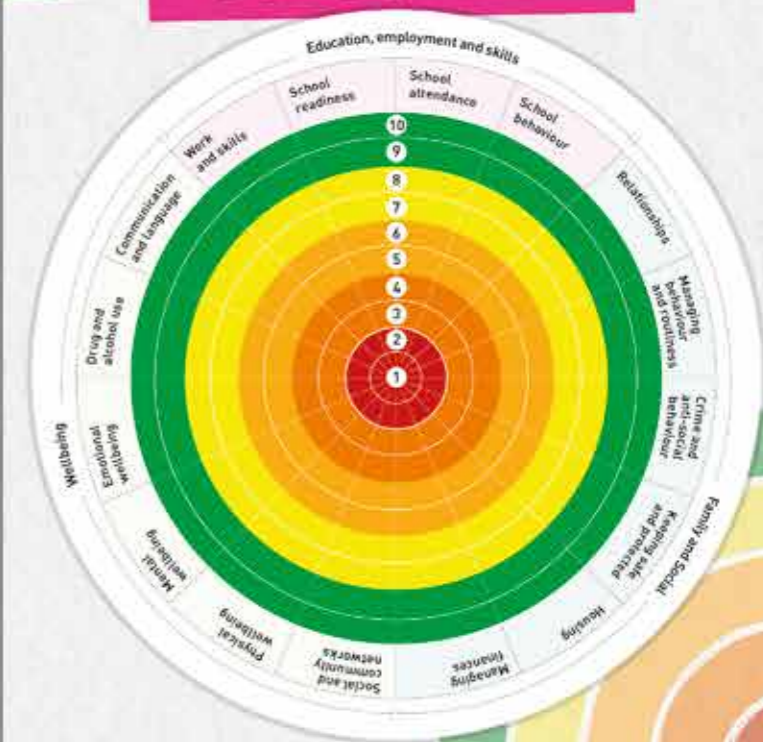
WHO AND WHY

SCORING

I feel very confident that I can manage in this area	9-10
I feel confident that I can manage in this area	7-8
I feel unsure about my confidence that I can manage in this area	5-6
I feel I have very little confidence that I can manage in this area	3-4
I feel I have no confidence that I can manage in this area	1-2

Scoring tool for adults
www.salford.gov.uk/media/390300/family-assessment-tool_adult.pdf

Scoring tool for young people
www.salford.gov.uk/media/390302/family-assessment-tool-childrens.pdf



- Physical wellbeing
- Mental wellbeing
- Emotional wellbeing
- Crime and anti-social behaviour
- Keeping safe and protected
- Housing
- Managing finances
- Social and community
- School behaviour
- School attendance
- School readiness
- Work and skills
- Communication and language
- Drug and alcohol use
- Managing behaviour and routines
- Relationships

AREAS TO BE ASSESSED

TEAM AROUND THE FAMILY

A **Team Around the Family (TAF)**⁶ meeting is a **meeting**⁷ with you and your family and different professionals to review the action plan at early help level and you will be provided with a copy of a plan that you have agreed to. Whilst your family is being supported at TAF there will a practitioner who will be the **Lead professional**⁸ one of their role's is to be the main point of contact for the you and your family.

- 6 www.salford.gov.uk/media/391136/family-assessment-review.docx
- 7 www.salford.gov.uk/media/390526/process-of-a-taf-signs-of-safety-may17.pdf
- 8 www.salford.gov.uk/fa-leadprofessional

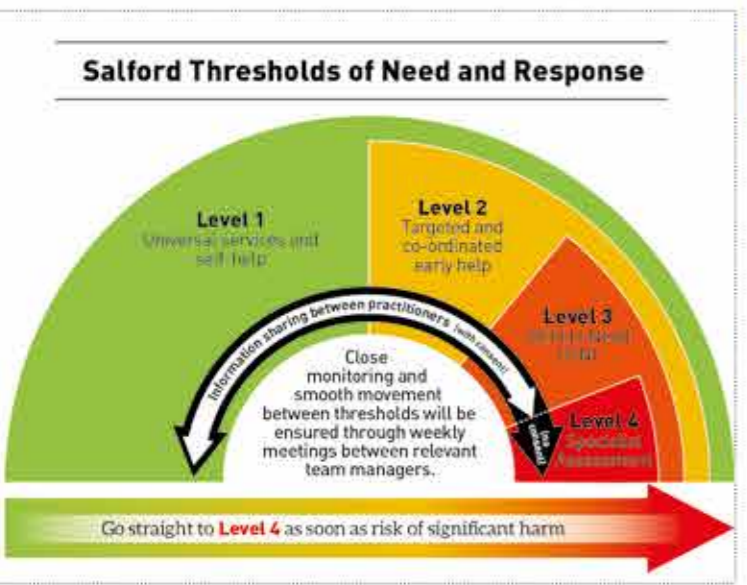
- 3 www.salford.gov.uk/media/390524/family-assessment-form-may17.docx
- 7 www.salford.gov.uk/media/390213/information-sharing_advice_safeguarding_practitioners.pdf
- 5 www.salford.gov.uk/children-and-families/safeguarding-children/early-help-for-families

All information that is shared is kept confidential unless there is a **'Safeguarding concern'**. Personal information will be shared to provide support to you and your family, more information on this is in the **Privacy Notice**⁵

A Family Assessment will be completed WITH an you or family, a Family Assessment cannot be completed without consent, for more information on what you be consenting to please see page 11 on the **Family Assessment Form**³

AND PRIVACY NOTICE CONSENT, CONFIDENTIALITY

SALFORD CAF TEAM



For further information, Enquiries, TAF Charing, Training, Voice of the Child and EIP Advice call **0161 603 4239** or email CAF@salford.gov.uk