

Early Support Team Key Worker Service

What is a Key Worker?

A Key Worker is a source of support and coordinates services for a disabled child and their family.

Your Key Worker is:

Phone number: 0161 778 0384

Mobile number:

“Having a key worker has given us the support we needed at every step.”



Salford City Council

“Our Designated Key Worker took so many pressures off us as a family by liaising with professionals for us, while we enjoyed valuable time with our child.”

Parent of a child with a Down Syndrome

What can a Key Worker do for me?

Help co-ordinate services and appointments

Provide emotional support

Give support in meetings and act as an advocate for you

Provide information

Signpost to other services

Support transition plans

Liaise with professionals known to your family

Support you in identifying day care provision

Help to get answers to your questions

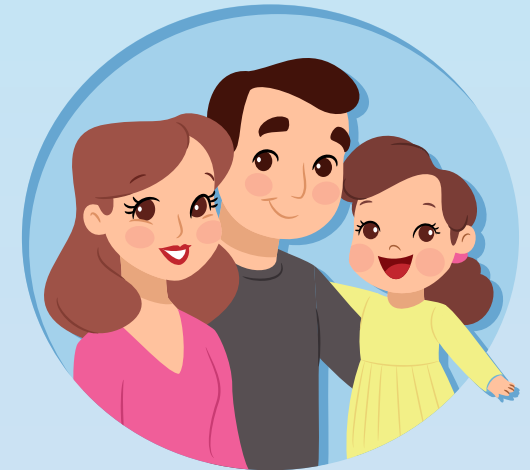
A Key Worker service

Our service provides support to young children and their families aged 0-5 years with complex health and care needs. We work in partnership with parents and carers, professionals and services supporting your child.

Salford's Child Development Forum.

We are a home visiting service which, through discussions with parents and carers, will strive to provide the best support for you and your family.

A referral to the Early Support, Key Worker Service is usually via the completion of a Family Assessment by a professional known to your child, this is usually a Health Visitor, a Consultant Paediatrician or a professional who sees your child regularly or a referral can be via discussions at



“The realisation that our son’s disability was going to make such an impact on our lives was made so much easier to comprehend and comes to terms with, with the support of our Designated Key Worker.”

Parent of a child with a rare diagnosed genetic condition

“Having a Key Worker has helped us as a family to have all the relevant services involved to support and meet the needs of our son.”

Parent of a child with a visual impairment

Your Key Worker will actively promote the inclusion of all children within the community. To find out more about support that is available locally for children and young people with special educational needs or disabilities visit:

**[www.salford.gov.uk/children-and-families/
local-offer-special-educational-needs/](http://www.salford.gov.uk/children-and-families/local-offer-special-educational-needs/)**

How to contact the Early Support Team

Starting Life Well Service
Swinton Gateway
100 Chorley Rd
Swinton
Salford
M27 6BP

☎ 0161 778 0384
✉ SLW@salford.gov.uk
Team leader: Lynne Moody
✉ Lynne.moody@salford.gov.uk

“My Key Worker has been my rock, supporting us at times that have been difficult but giving us the confidence to provide the best opportunities to meet the needs of our child regardless of her disability.”

Parent of a child with autism